


## Flash Powerpoint

**Il monitoraggio delle neoplasie: attualità e prospettive: Melanoma**  
**Torino 14-15 giugno 2005**  
 R.M.Dorizzi, M.Governa,  
 Azienda Ospedaliera Verona

I Convegno I  
 “La clinica e la diagnostica al servizio del paziente”  
 Centro Congressi Limotto  
 TORINO  
 14-15 GIUGNO 2005



**Non è un tumore raro (USA nel 1999: 47.000 nuovi casi e 7500 decessi)**



**1 su 90 svilupperà un melanoma**

**FATTORI DI RISCHIO**

- eccessiva esposizione
- eta' adulta (>15aa)
- lentigo maligna
- familiarita'
- immunosoppressione
- numerosi nevi (>40)

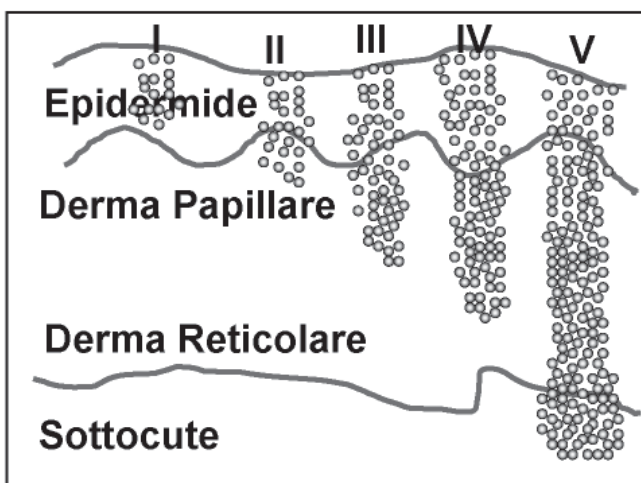
I Convegno I  
 “La clinica e la diagnostica al servizio del paziente”  
 Centro Congressi Limotto  
 TORINO  
 14-15 GIUGNO 2005



## Breslow thickness

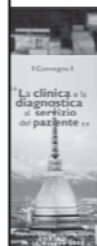
**Vertical tumour thickness as measured by an ocular micrometer from the top of the granular cell layer to the deepest point penetration**

Breslow 1970

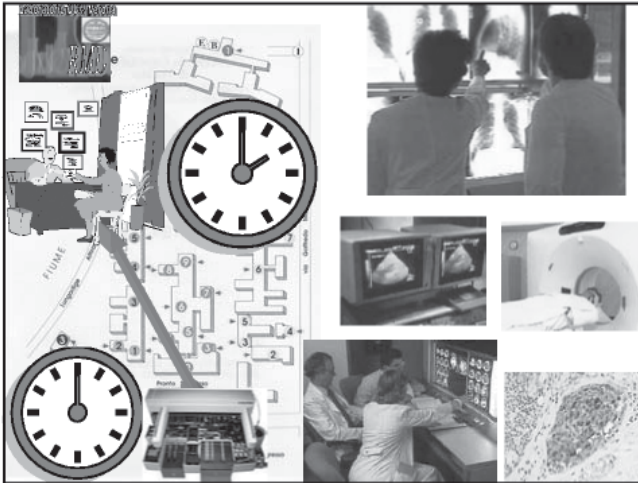


## S-100 concentration

- Parallels disease progress
- Early detects metastases
- Lessens the need for expensive and invasive procedures



Dorizzi RM, et al. Ann Clin Biochem 1999; 36: 777-8



## October 99 - October 03

178 cutaneous MM

Breslow 1 - 4 mm (stage I and II)

Female: 91 (51%) male: 87 (49%)

**880 blood samples**

- time 0 (diagnosis)
- periodic controls
- mean follow-up: 34 months

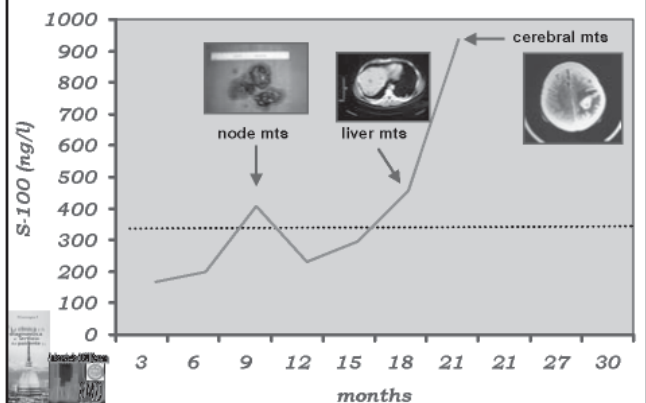


## October 99 - October 03

	MTS	NED	Total
POS	14	3	17
NEG	3	158	161
TOT	17	161	178



## RR, M 72 y, Breslow 2.8 Clark III



## Conclusions

- S-100 concentration assay allows an **earlier detection** of recurrence or metastasis
- the assay is **reliable** and **fast**



## Conclusions

- should be **serially** measured in melanoma follow-up
- helps to identify **high risk** patients who might benefit from surgery, chemo/immunotherapy

